



NIPPON MARINE

ENTERPRISES





OUR VISION

A future full of new discoveries where children's curiosity knows no bounds.

OUR MISSION

Pioneering the discovery of new frontiers with those who care about our planet.

OUR VALUES

On-site expertise

Responding with flexibility, precision, and care in any environment or situation.



Empathic collaboration

Understanding the objective of the operation, and committing together to achieve it.



Eagerness to improve

Building upon existing skills and knowledge to continually evolve and elevate our capabilities.



Services



Vessel Operation

Utilizing our deep knowledge of the ocean and advanced operational technology,
We operate and manage research vessels and training vessels.



STRENGTHS:

- Extensive maritime knowledge
- Advanced operational skills
- Safe operation by Japanese crew of 230
- Navigation support provided by shore staff
- Technical support, including maintenance

CLIENT:

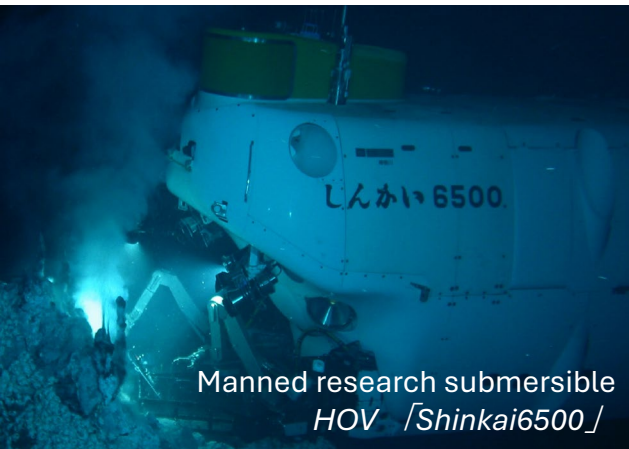
- Japan Agency for Marine-Earth Science and Technology (JAMSTEC) ; National research institute
- Tokyo Metropolitan Oshima Maritime International High School
- Salvage / Construction company
- Marine geophysical services company

OCCUPATION:

- Navigation officer
- Engineer / Oiler
- Radio operator
- Able Seaman
- Chef / Steward

Submersibles and Underwater Vehicles Operation

Focusing on submersibles used in deep-sea research, we operate, maintain, improve various submersibles, and develop related equipment by 40 operators.



Manned research submersible
HOV [Shinkai6500]



Work-class ROV



AUV



Observation-class ROV/Mini ROV

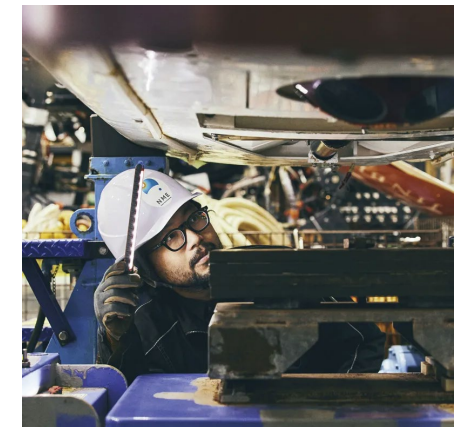
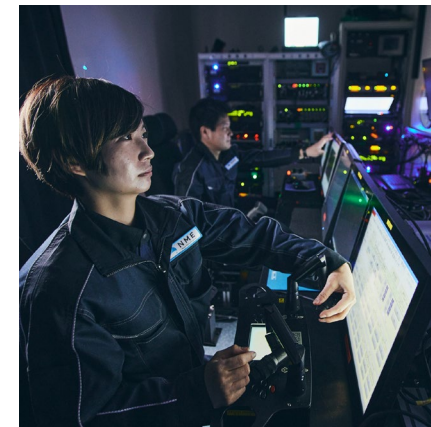
STRENGTHS:

Operating ROVs any types / sizes

Flexible repair and maintenance capabilities at sea

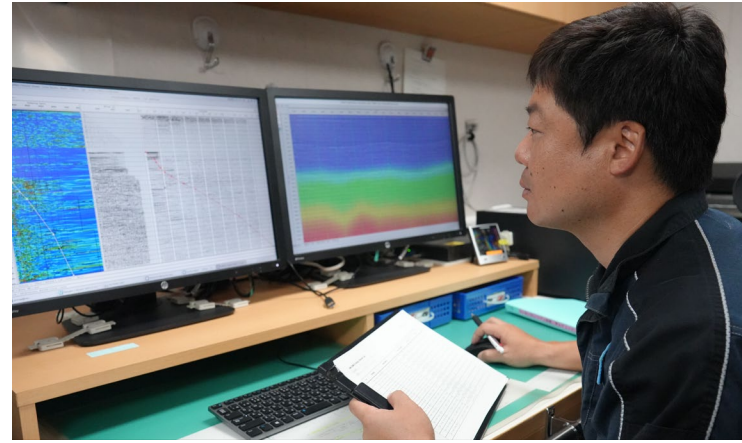
Modifications aimed at improving functionality

Design, customization, and development tailored to your needs



Support for Marine Surveys & Observations

50+ technicians operate and manage marine surveys and observations, such as MCS (Multi-Channel Seismic Survey), and conduct analysis of all types of marine observation data.



STRENGTHS:

- Preliminary investigation for construction in offshore wind power generation
- The operation and management of MCS, as well as data analysis
- A wealth of experience in operating and managing over 300 OBS
- Dispatching of seismic operators, navigators, engineers, and analysts
- Capable of accommodating all types of marine observation equipment
- Participating in the Japanese Antarctic Research Expedition (JARE) annually



Provision of technology for marine construction

We dispatch specialists and engineers to marine construction projects such as offshore wind power generation projects.



OCCUPATION:

Navigation officer
Dynamic positioning operator
Engineer / Oiler
Able Seaman
Chef / Steward
ROV operator
Marine Technicians specializing in Observations

Education

To stimulate children's curiosity and for the future full of new discoveries.

We use our experience and knowledge to provide the next generation of marine education opportunities.



EXAMPLES:

Operation of training vessel -Tokyo Metropolitan Oshima Maritime International High School-

Offshore training services -Akita School of Wind and Sea Training Center-

Teaching observation techniques to oceanography students -Kobe Ocean-bottom Exploration Center (KOBEC)-

Underwater Drone Piloting Experience -For junior high and elementary school students-

About us



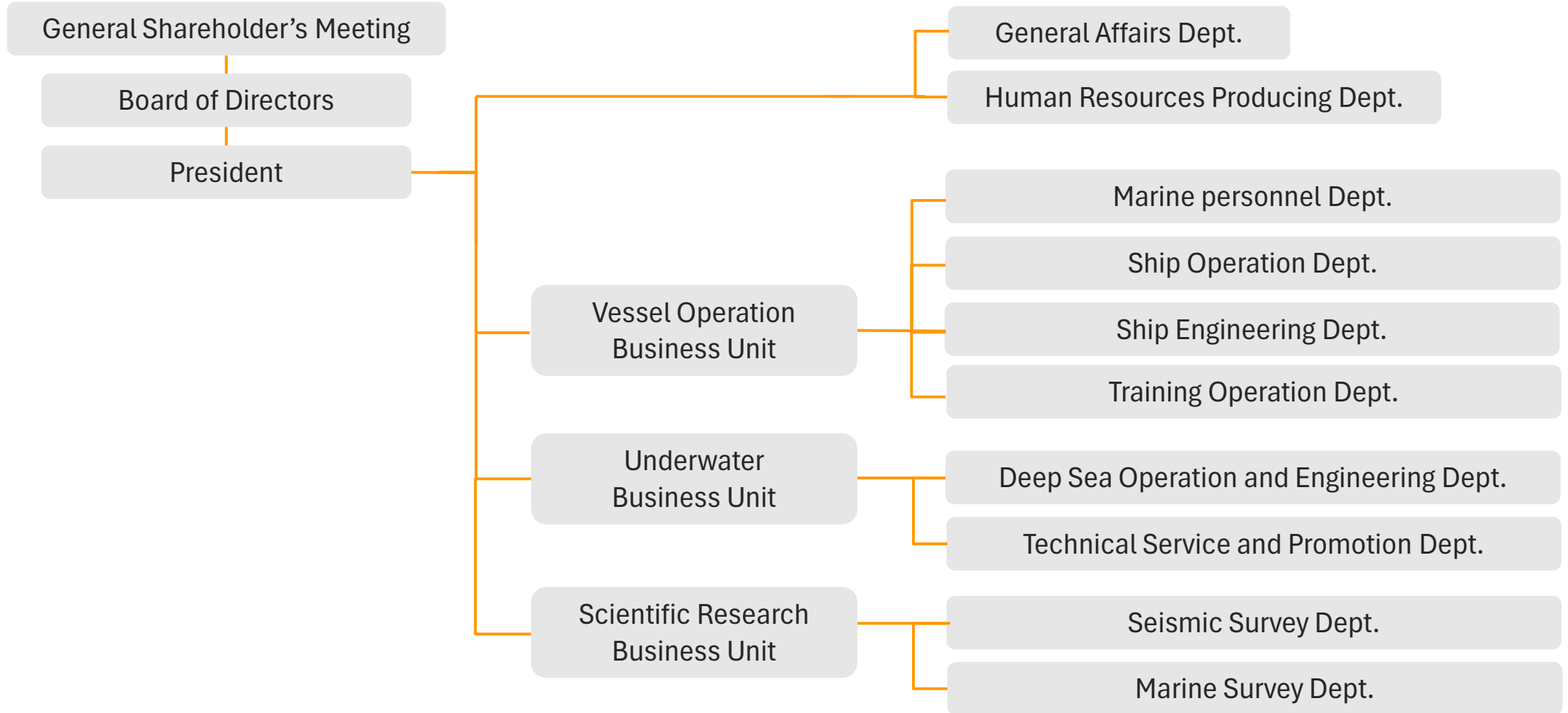
NME

Nippon Marine Enterprises



Company name	Nippon Marine Enterprises, Ltd.
President	Masakatsu Yamada
Date Founded	January 31, 1980
Capital	50 million yen
Location	14-1, Ogawa-chou, Yokosuka-City, Kanagawa, Japan
Main Business	Research vessels, submersibles, and observation systems operation/management, Support for scientific research, Offshore construction, Marine safety training center
Client	JAMSTEC (Japan Agency for Marine-Earth Science and Technology) Tokyo Metropolitan(Maritime High School) Construction/ Salvage/ Research companies, public agencies
Shareholders	NISSUI Corporation, GLOBAL OCEAN DEVELOPMENT INC.
Number of employees	360 (270 : Japanese Seafarers) (as of AUG, 2024)

Organization



Sail towards new discoveries——



NIPPON MARINE
ENTERPRISES